



## RELAXING & STIMULATING



# Body Tapping HANDHELD MASSAGER

WELLNESS

LANAFORM

# Body Tapping LA110222



Master box dimensions:  
34,4 x 24,8 x 43,2 cm



Master Box weight  
5,55 kg



Colour Box dimensions  
16 x 11,2 x 40,4cm



Colour Boxes/  
Master Box  
4 pcs



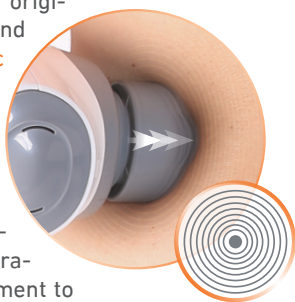
Colour Box weight  
1,25 kg



Power  
17 W

Give yourself a massage at any time using tapping time with Body Tapping, effective against **contractures** and **muscle fatigue**. Its ergonomic design means it is easy to handle, giving easy access to every area of your body.

Massage using tapping originates from Sweden and consists of **rhythmic vertical beats** on the skin with both hands. This technique is effective in stimulating the muscles, but also in releasing body tension. Body Tapping accurately imitates this movement to provide you with a **genuine feeling of wellbeing**.



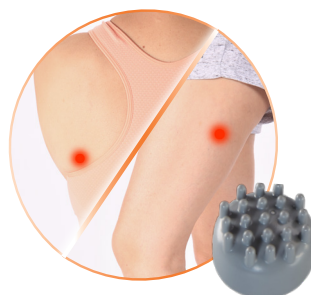
## 6 massage areas - 3 heads

With its **two levels of intensity** and **3 interchangeable heads** on the Body Tapping device, you'll always be able to adjust your massage to produce the effect you want and in the area targeted:

- A round head for a **gentler massage** on the neck and cervical vertebrae
- A head with nodes for an **intensive massage** of the back and thighs
- A pointed head for an **accurate massage** of specific acupuncture points on the back and calves



**Round head**



**Head with nodes**



**Pointed head**

